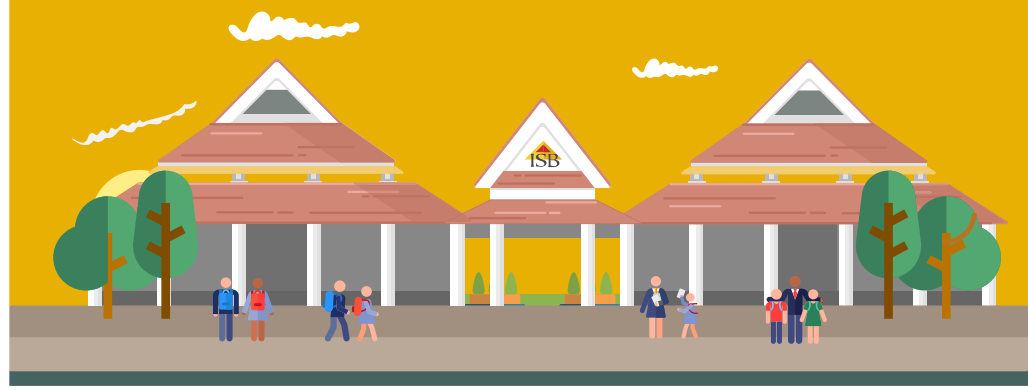


ISB International School Bangkok



# Return to Campus Made Easy



# Return to Campus Made Easy

ISB Reopening On Campus Cohorts					
	Monday Sept 27	Tuesday Sept 28	Wednesday Sept 29	Thursday Sept 30	Friday Oct 1
ES	Virtual School	Asynchronous Virtual Learning Day	Black (A)	Gold (B)	Black (A)
MS	Virtual School		6 (A)	6 (A)	7 & 8 (B)
HS	Virtual School		11 & 12 (A)	11 & 12 (A)	9 & 10 (B)
	Monday Oct 4	Tuesday Oct 5	Wednesday Oct 6	Thursday Oct 7	Friday Oct 8
ES	Gold (B)	Black (A)	Gold (B)	Black (A)	Gold (B)
MS	7 & 8 (B)	6 (A)	6 (A)	7 & 8 (B)	7 & 8 (B)
HS	9 & 10 (B)	11 & 12 (A)	11 & 12 (A)	9 & 10 (B)	9 & 10 (B)
	OCTOBER BREAK Oct 11-15				

Elementary School Cohorts		
ES Grade Levels	Cohort A (Black)	Cohort B (Gold)
PREK1	Stalnaker	Trodden
PREK2	Vidayanakorn, Nelson	Van Oosten
KG	Swanlaw, Pool	Brickerd, Whitman
GRADE 1	Scranton, McHale, Barness	Roback, Murphy
GRADE 2	Hagen, Giles	Rivera, Murray, Nagamine
GRADE 3	Macky, Marshall, Longman	Day, Hart
GRADE 4	Merritt, Crimi, Bruce	Dawson, Bailey, Purcell
GRADE 5	Davis, Perkins, Eide	Romero, Weible

## Campus access

In order to access campus, all students are required to have:

- [ATK Testing](#) on Sundays (between 4:00pm and 8:00pm) and Tuesdays (between 4:00pm and 8:00pm)
- [The ATK Form](#) must be submitted with ATK testing results on Sundays and Tuesdays (between 4:00pm and 8:00pm)
- An **initial testing** will need to be performed on **Friday 24 September** between **7:00am and 11:00am**. Results must be [reported in the ATK Form](#) by 11:00am
- ID Cards will be required for entering campus and we will only allow access to campus if ATK testing has been submitted as per the timelines above
- Masks must be worn at all times

## Uniforms

Uniforms are available for purchase this week in the Chevron Theatre Foyer from 8:00am to 4:30pm. [Please click here to make an appointment](#) to come to campus to buy uniforms). Note - HS students may come unaccompanied by a parent but must still make an appointment.

## What to Bring to School when school returns to in person classes

- Masks (more than one)
- ID Card
- Water Bottle
- Usual school materials including a charged iPad / laptop



## Arrival and Departure

- Arrival / Departure Times:  
Elementary School will start at 7:35am and Dismissal begins at 2:15pm  
Middle School will start at 7:20am and Dismissal begins at 2:25pm  
High School will start at 7:50am (7:20am for HL classes) and Dismissal begins at 2:40pm
- No student should arrive on campus before 7:00am
- Student pick up after school - students will be alphabetical by surname in front of school

## Food Service

Food will be available on a limited basis. Lunches and snacks will be available, but all Grind locations will be closed to begin with.

- Lunch for all students will be available as a covered plate pick up option (use campus card for MS and HS).
- Ensure students have sufficient funds in the campus cards (MS & HS)

## Transportation

- If you have signed-up for transportation, Montri bus service will contact you to confirm pick-up times and provide the Bus card
- Check student temperature before going to the bus
- A Montri Bus card is required to board the buses/vans

## Contact Tracing

- Keep track of contacts and exposures outside of school in case contact tracing is required
- Limit family exposure and contacts as much as possible to minimize risk of infection

## Who do you call?

- For a positive ATK test: call the divisional principal immediately:  
**Justin Alexander (HS Principal) - 062 332 5955**  
**Dennis Harter (MS Principal) - 089 520 2547**  
**Michael Allen (ES Principal) - 062 549 1500**
- Questions regarding ATKs: ISB Health Center 02 963 5800 ext. 1143 or 1144
- Troubleshooting the ATK Form: Ed Tech 02 963 5800 ext. 1151

## Important Dates

- **September 21 - 24:** ATK Test pick up at ISB. [Schedule your pick-up time here](#)
- **September 24:** Initial ATK test completed at home and ATK Form submission by 11:00am
- **September 28:** Asynchronous Learning Day (Teacher Safety Training)
- **September 29:** Anticipated Start of School pending government approval
- **October 11-15:** October Break

## When Does My Child Come to School?

- Students will be placed in either Group A or Group B
- In MS & HS, Group A students will come to school for two consecutive days and then learn virtually at home for two consecutive days. Group B students will do the opposite of Group A students.
- In ES, Groups A & B will come to school on alternate days.
- Principals will be in touch soon with group allocation and schedules

See our ATK Top Tip's for Testing video ([click here](#))

